




MARINE GENERATORS - base KUBOTA



DIMENSIONS - soundproof

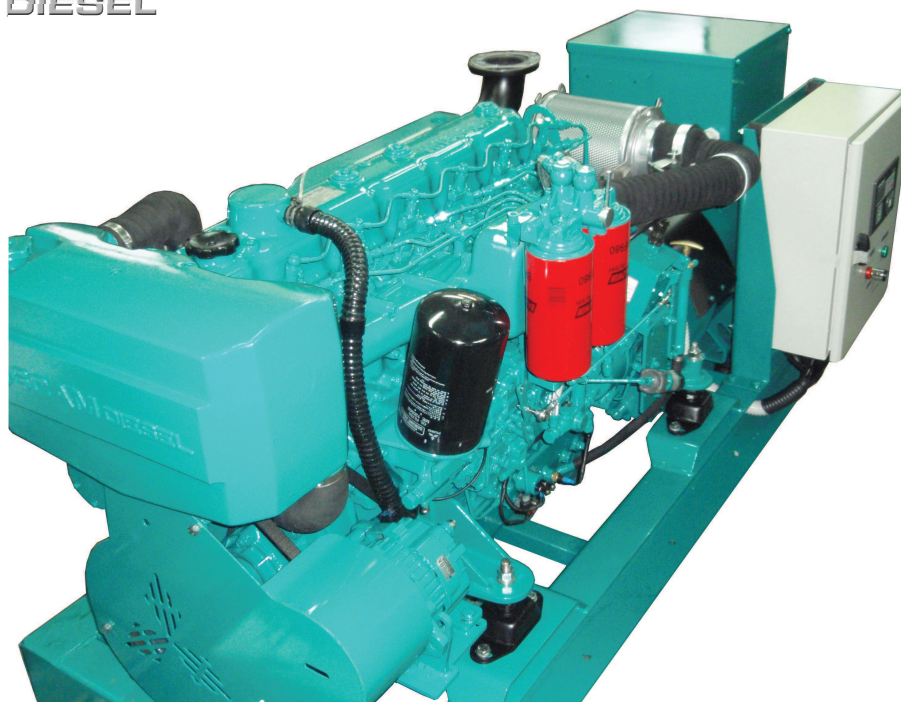
GENSET model monophase	GENSET model threephase	Power max		Dimensions			Weight kg
		monophase	threephase	Length	Width	Height	
		kVA / kW	kVA / kW	mm	mm	mm	
SDA 5,5/3 M-S		5,5 / 5,5		910	540	675	180
SDA 8/3 M-S		8 / 8		1010	540	675	220
SDA 7,5 M-S	SDA 10 M-S	7,5 / 7,5	10 / 8	1130	600	700	280
SDA 9 M-S	SDA 14 M-S	9 / 9	13,5 / 10,8	1210	600	750	320
SDA 16,5 M-S	SDA 20 M-S	16,5 / 16,5	20 / 16	1210	600	750	450 / 430
SDA 19 M-S	SDA 25 M-S	19 / 19	25 / 20	1490	700	900	570 / 550
SDA 24 M-S	SDA 30 M-S	24 / 24	30 / 24	1490	700	900	630 / 590
SDA 27 M-S	SDA 35 M-S	27 / 27	35 / 28	1490	700	900	660 / 640
SDA 33 M-S	SDA 40 M-S	33 / 33	40 / 32	1590	700	900	710 / 670
SDA 45 M-S	SDA 50 M-S	45 / 45	50 / 40	1590	700	900	780 / 730

OPTION

Standard equipment	Additional equipment
<ul style="list-style-type: none"> - instrument panel (digital or analogue):  <ul style="list-style-type: none"> - basement - engine mount brackets - flexible engine mounts 	<ul style="list-style-type: none"> - sound and thermal insulation box - additional instrument panel with a 7-meter long cable - sea suction (Intake strainer, ball valve, seawater filter) - exhaust (waterlock silencer, flexible exhaust pipe, SS transom connection (through hull), clamps) - fuel tank, fuel prefilter, connectors - two pole system - electrical system 24 V



MARINE GENERATORS - base MITSUBISHI



TECHNICAL FEATURES

GENSET model	Power max		Voltage	Frequency	Dimensions			Weight
	Continuous	Stand by			Length	Width	Height	
	kVA / kW	kVA / kW	V	Hz				mm
SDA 130 ME M	130 / 104	140 / 112	400/230	50	2100	850	1000	1290
SDA 150 ME M	150 / 120	160 / 128	400/230	50	2100	850	1000	1390
SDA 180 ME M	180 / 144	195 / 156	400/230	50	2500	950	1200	2000
SDA 225 ME M	225 / 180	240 / 192	400/230	50	2500	950	1200	2200

GENSET model	Engine model	Power max	Speed	No cylind	Bore / Stroke	Cylinders displac	Air Intake	Alternator model
		kW	rpm		mm	cm ³		
SDA 130 ME M	SD 16.200 T	106	1500	6, L	118 / 115	7545	T	ECO34-1L/4
SDA 150 ME M	SD 16.240 TIC	132	1500	6, L	118 / 115	7545	TIC	ECO34-2L/4
SDA 180 ME M	SD 24.280 T	168	1500	6, L	130 / 150	11945	T	ECO38-1SN/4
SDA 225 ME M	SD 24.320 TIC	198	1500	6, L	130 / 150	11945	TIC	ECO38-3SN/4




MARINE GENERATORS - base FPT



GENSET model	Power max		Voltage	Frequency	Dimensions			Weight
	Continuous	Stand by			Length	Width	Height	
	kVA / kW	kVA / kW	V	Hz				mm
SDA 40 FPT M	40 / 32	44 / 35	400/230	50	1475	830	1180	750
SDA 60 FPT M	60 / 48	66 / 53	400/230	50	1950	850	1180	900
SDA 85 FPT M	85 / 68	94 / 75	400/230	50	1950	850	1180	1050
SDA 105 FPT M	105 / 84	115 / 92	400/230	50	1950	850	1180	1130
SDA 200 FPT M	200 / 160	215 / 172	400/230	50	2200	900	1200	1700
SDA 250 FPT M	250 / 200	270 / 216	400/230	50	2500	1100	1300	2200
SDA 350 FPT M	350 / 280	370 / 296	400/230	50	2500	1100	1300	2450

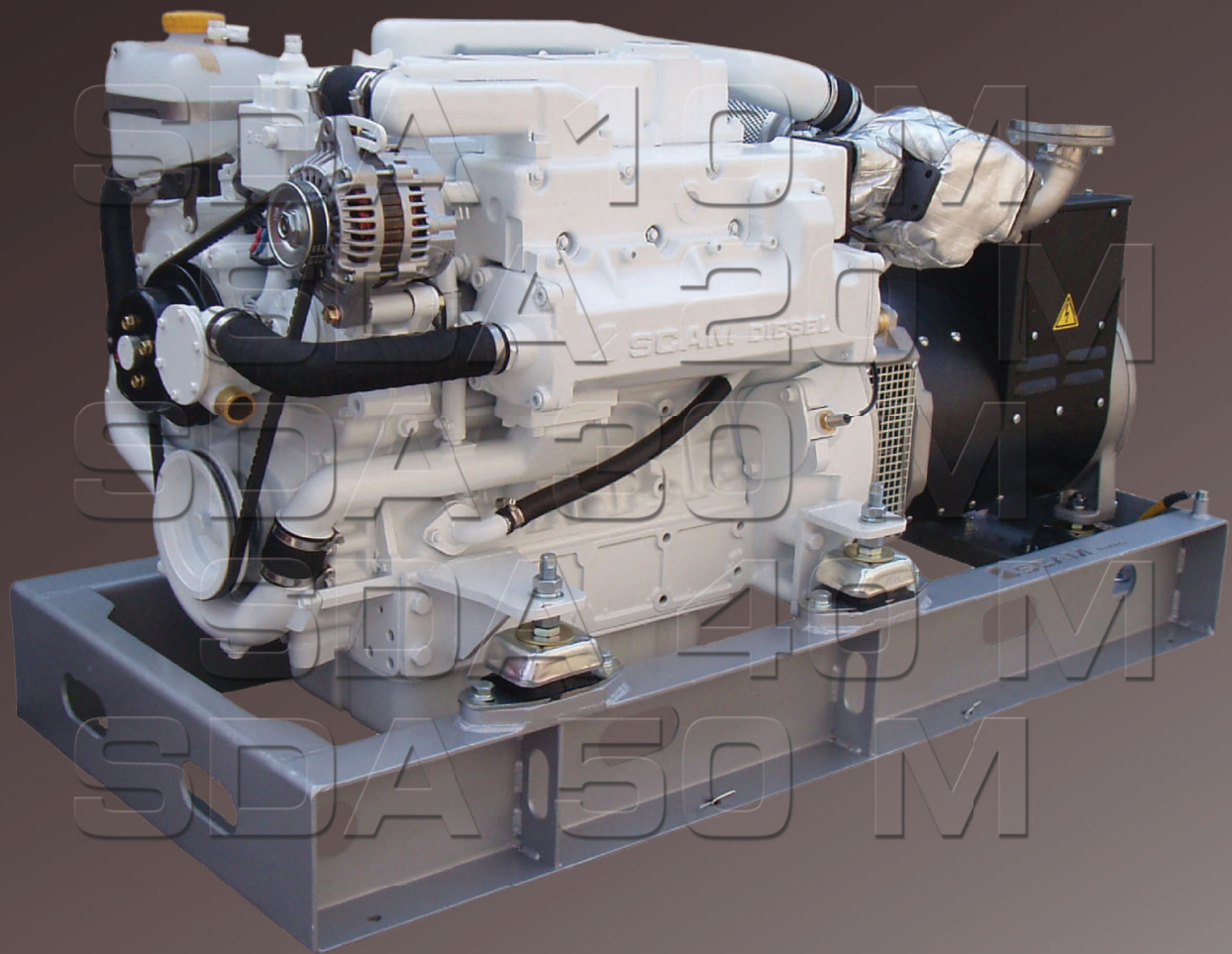
GENSET model	Engine model	Power max	Speed	No cylind	Bore / Stroke	Cylinders displac	Air Intake	Alternator model
		kW	rpm		mm	cm ³		
SDA 40 FPT M	FPT N45 100	36	1500	4, L	104 / 132	4500	NA	ECO32-3S/4
SDA 60 FPT M	FPT N67 150	54	1500	6, L	104 / 132	6700	NA	ECO32-2L/4
SDA 85 FPT M	FPT N67 220	78	1500	6, L	104 / 132	6700	T	ECO34-1S/4
SDA 105 FPT M	FPT N67 280	100	1500	6, L	104 / 132	6700	TIC	ECO34-2S/4
SDA 200 FPT M	FPT C90 380	220	1500	6, L	117 / 135	8700	TIC	ECO38-2SN/4
SDA 250 FPT M	FPT C13 330	240	1500	6, L	135 / 150	12880	TIC	ECO38-1LN/4
SDA 350 FPT M	FPT C13 500	350	1500	6, L	135 / 150	12880	TIC	ECO38-3LN/4

OPTION

Standard equipment	Additional equipment
<ul style="list-style-type: none"> - instrument panel:  <ul style="list-style-type: none"> - basement - engine mount brackets - flexible engine mounts 	<ul style="list-style-type: none"> - sound and thermal insulation box - additional instrument panel with a 7-meter long cable - sea suction (intake strainer, ball valve, seawater filter) - exhaust (waterlock silencer, flexible exhaust pipe, SS transom connection (through hull), clamps) - fuel tank, fuel prefilter, connectors <ul style="list-style-type: none"> - Class certification



MARINE GENERATORS



SCAM marine d.o.o. production and sales of nautical equipment



Mavri bb, 51216 Viškovo, CROATIA
tel.: +385 51 503 626 fax: +385 51 503 629
info@scam-marine.hr
www.scam-marine.hr

Dealer:

